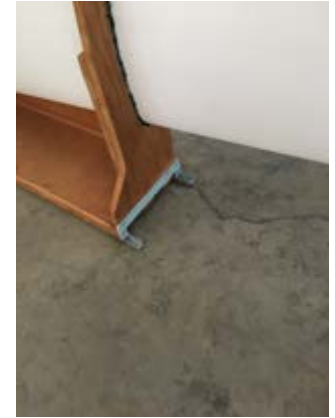


Removal of Pegasus from the Trailer



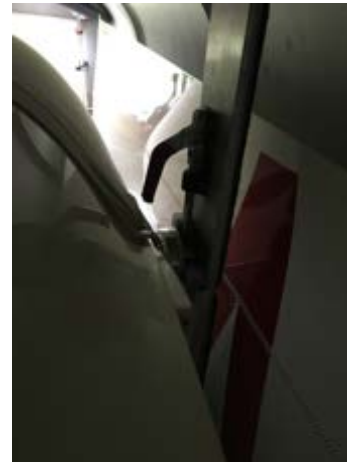
Assembly of the Pegasus and ASW19 are similar and are outlined below.
1, Lower the rear ramp. The double screw-jack assembly plus the handle can slide out of the right side rear of the trailer. The two extension hooks at the rear of the loading ramp hook over the lifting pads on the two jacks. Raise the jack so that the Pegasus wheel will be clear of the ground when lowered. The tracks for the wing dollies need to be roughly level.

Removal of Pegasus from the Trailer



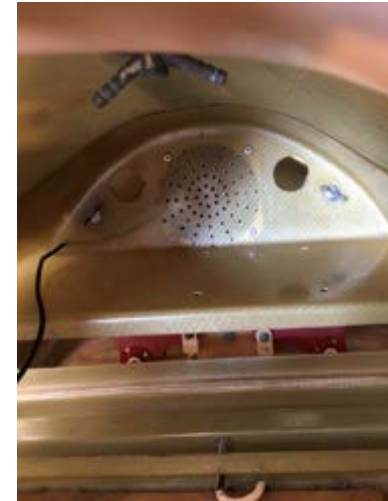
2, The tailplane support frame is attached to the trailer using a double-threaded screw. Unscrew the threaded screw bolt to release the tailplane support from the trailer, then raise the screw further so that it latches via the second thread. Slide the tailplane out of the left rear of the trailer and place it alongside the trailer near the trailer wheel so that it does not impede moving the wings panels. Take care to not damage the ends of the tailplane due to the tailplane support frame being narrower than the span of the tailplane.

Removal of Pegasus from the Trailer



- 4, Unfasten the auto lap belt holding the Pegasus tail in the trailer, and release the two DeStaCo clamps that lock the fuselage dolly via the wing-pin sleeves.
- 5, Lift the tail dolly of the Pegasus to release the wing-pin attachments and then roll the fuselage back out of the trailer until the fuselage dolly at the outer limit of the track.

Removal of Pegasus from the Trailer



- 6, Remove the tail dolly and put it under the rear of the trailer so that you do not trip over it when moving the heavy wing panels. Note that the tail dolly must be removed, otherwise, then the fuselage can move sideways which causes the wing stands to tilt and fall over resulting in the wings falling onto the ground.
- 7, Open the canopy and use the aluminized canopy cover to minimize the chance that sun reflected from the canopy will burn the instrument panel cover.
- 8, Lower the gear and ensure that the gear is locked down and not touching the ground
- 9, Remove the loud-speaker panel.
- 10, Ensure that the batteries are installed, connected, and correctly clamped in the battery box. Use the B50 to check the voltage is at least 12.7V on both the A and B power busses. Check the radio and variometers

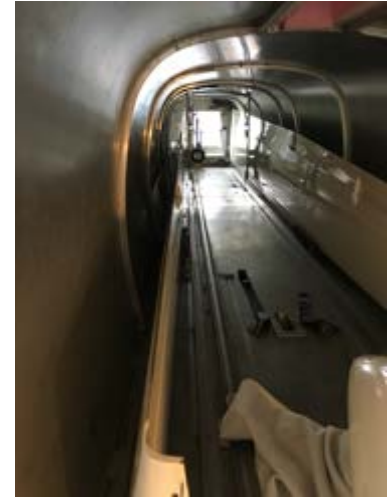
Removal of Pegasus from the Trailer



11, Clean and grease the wing pins, the four wing pins, all the Hotellier ball connectors, and the tailplane pins. Warning: Do not install the tailplane without a fresh coat of lubricant on the tailplane pins, otherwise it can be difficult to remove the tailplane from the tail due to the close tolerance fittings. Note a baby bottle brush can be found in the trailer storage bin that is bent 90degrees to enable cleaning the two sockets at the top of the fin if necessary. This is a rare problem.

12, The right wing is attached first. The toggle clamp for the wing dolly in the trailer must be released to move wing dolly.

Removal of Pegasus from the Trailer



Removal of Pegasus from the Trailer

12, The right wing is attached first. The toggle clamp for the wing dolly in the trailer must be released to move wing dolly.

13, Insert the left wing and install the two main pins

14, Connect the aileron and airbrake Hotellier fittings and attach the safety wires. Because of the small size of the fuselage hatch, this is best done by feel followed by a visually check.

15, Attach the tailplane to the top of the fin and insert and lock the hold-down bolt.

16, Attach and safety the elevator Hotellier fitting. This is a critical safety item.

17, Install the ILEC total energy probe. The forward tip should point upwards so that the two tiny holes are in the plane of the tailplane.

18, Attach the wing and tailplane sealing tapes.

19, Attach both the loudspeaker and fuselage access panels.

20, Use the assembly checklist to ensure all assembly tasks have been completed.

21, Perform the positive control check.

Use the laminated check-lists that are in the right-side pocket of the Pegasus. Copies of the airworthiness certificate, registration, operating limits, and weight and balance are also in the pocket. Copies of the available checklists are given at the end of this document.

Removal of Pegasus from the Trailer



Removal of Pegasus from the Trailer

